

Guelph



75 Dawson Road

Asset Type: Industrial

Size: 120,000 SF

Major Tenant: Royal City Warehousing & Distribution



40 Taggart Street

Asset Type: Industrial

Size: 11,250 SF

Major Tenant: Northern Paving



999 York Road

Asset Type: Industrial

Size: 20,352 SF

Major Tenant: Ampersand Printing



65 Victoria Road South

Asset Type: Commercial

Size: 9,800 SF

Major Tenant: PartsSource (Canadian Tire Corporation)



589 Massey Road

Asset Type: Industrial

Size: 36,895 SF

Major Tenant: Bamco Custom Woodworking



50 Crimea Street

Asset Type: Industrial

Size: 80,000 SF

Major Tenant: Guelph Twines

London



412 Newbold Street

Asset Type: Industrial

Size: 18,706 SF

Major Tenant: Remco Tire

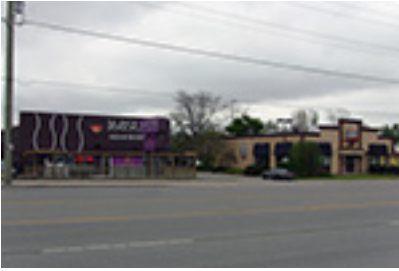


431 Boler Road

Asset Type: Plaza

Size: 17,308 SF

Major Tenants: Mac's Convenience, Little Caesar's Pizza



660-670 Oxford St W

Asset Type: Commercial

Size: 10,125 SF

Major Tenants: Crabby Joe's, 168 Sushi



1220 Royal York Road

Asset Type: Multi-Residential

Size: 17 Units

Toronto



2850 Lakeshore Blvd W

Asset Type: Commercial

Size: 8,520 SF

Major Tenant: Shopper's Drug Mart