

**Guelph**



**75 Dawson Road**

**Asset Type:** Industrial

**Size:** 120,000 SF

**Major Tenant:** Royal City Warehousing & Distribution



**40 Taggart Street**

**Asset Type:** Industrial

**Size:** 11,250 SF

**Major Tenant:** Northern Paving



**999 York Road**

**Asset Type:** Industrial

**Size:** 20,352 SF

**Major Tenant:** Ampersand Printing



**65 Victoria Road South**

**Asset Type:** Commercial

**Size:** 9,800 SF

**Major Tenant:** Partsource (Canadian Tire Corporation)



**589 Massey Road**

**Asset Type:** Industrial

**Size:** 36,895 SF

**Major Tenant:** Bamco Custom Woodworking



**50 Crimea Street**

**Asset Type:** Industrial

**Size:** 80,000 SF

**Major Tenant:** Guelph Twines

**London**



**412 Newbold Street**

**Asset Type:** Industrial

**Size:** 18,706 SF

**Major Tenant:** Remco Tire

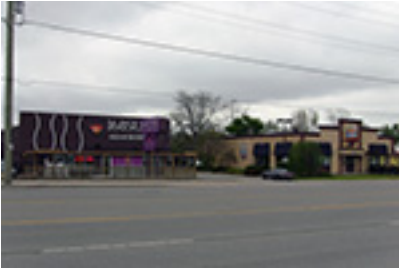


### 431 Boler Road

**Asset Type:** Plaza

**Size:** 17,308 SF

**Major Tenants:** Mac's Convenience, Little Caesar's Pizza



**660-670 Oxford St W**

**Asset Type:** Commercial

**Size:** 10,125 SF

**Major Tenants:** Crabby Joe's, 168 Sushi



**1220 Royal York Road**

**Asset Type:** Multi-Residential

**Size:** 17 Units

**Toronto**



**2850 Lakeshore Blvd W**

**Asset Type:** Commercial

**Size:** 8,520 SF

**Major Tenant:** Shopper's Drug Mart